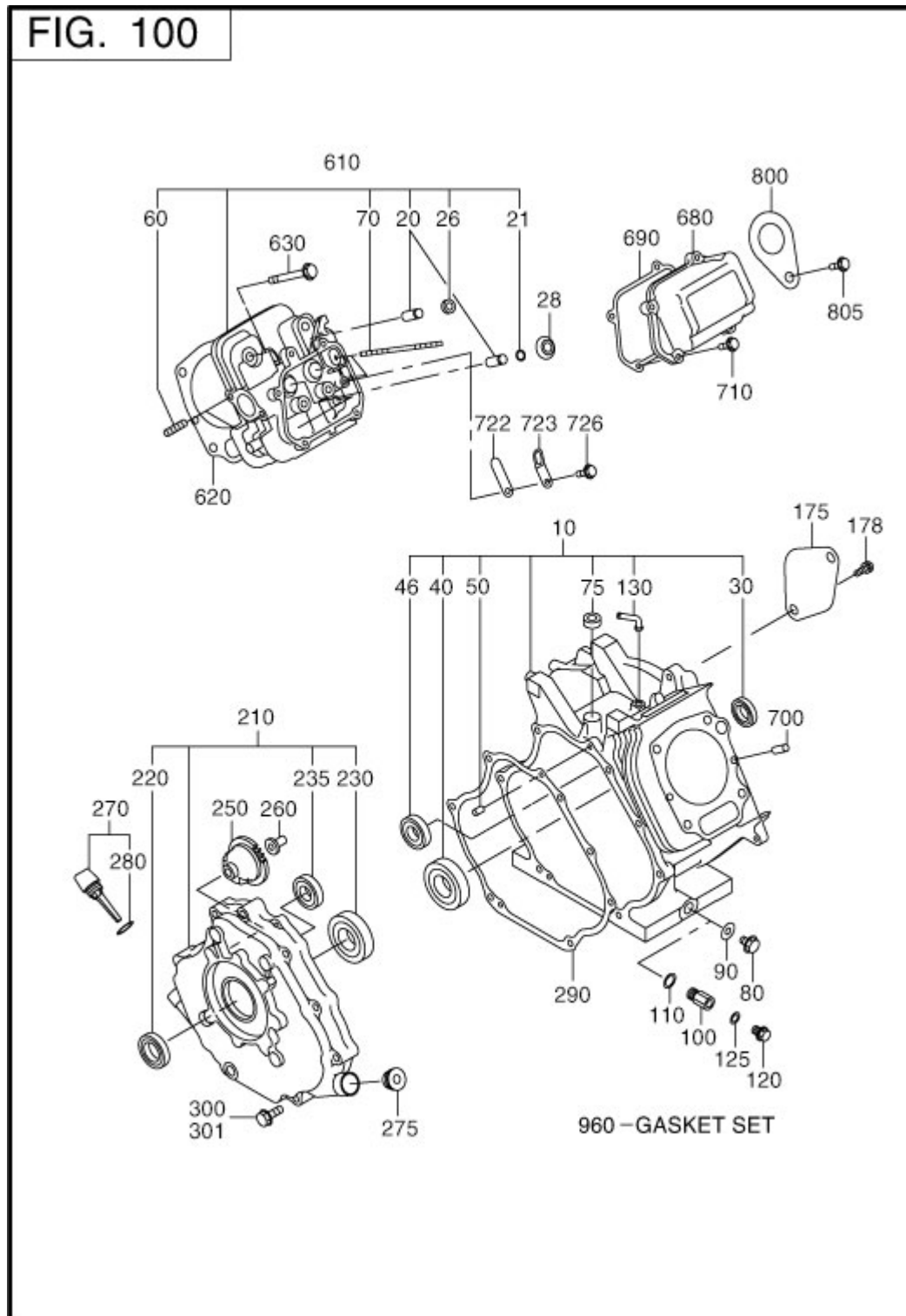


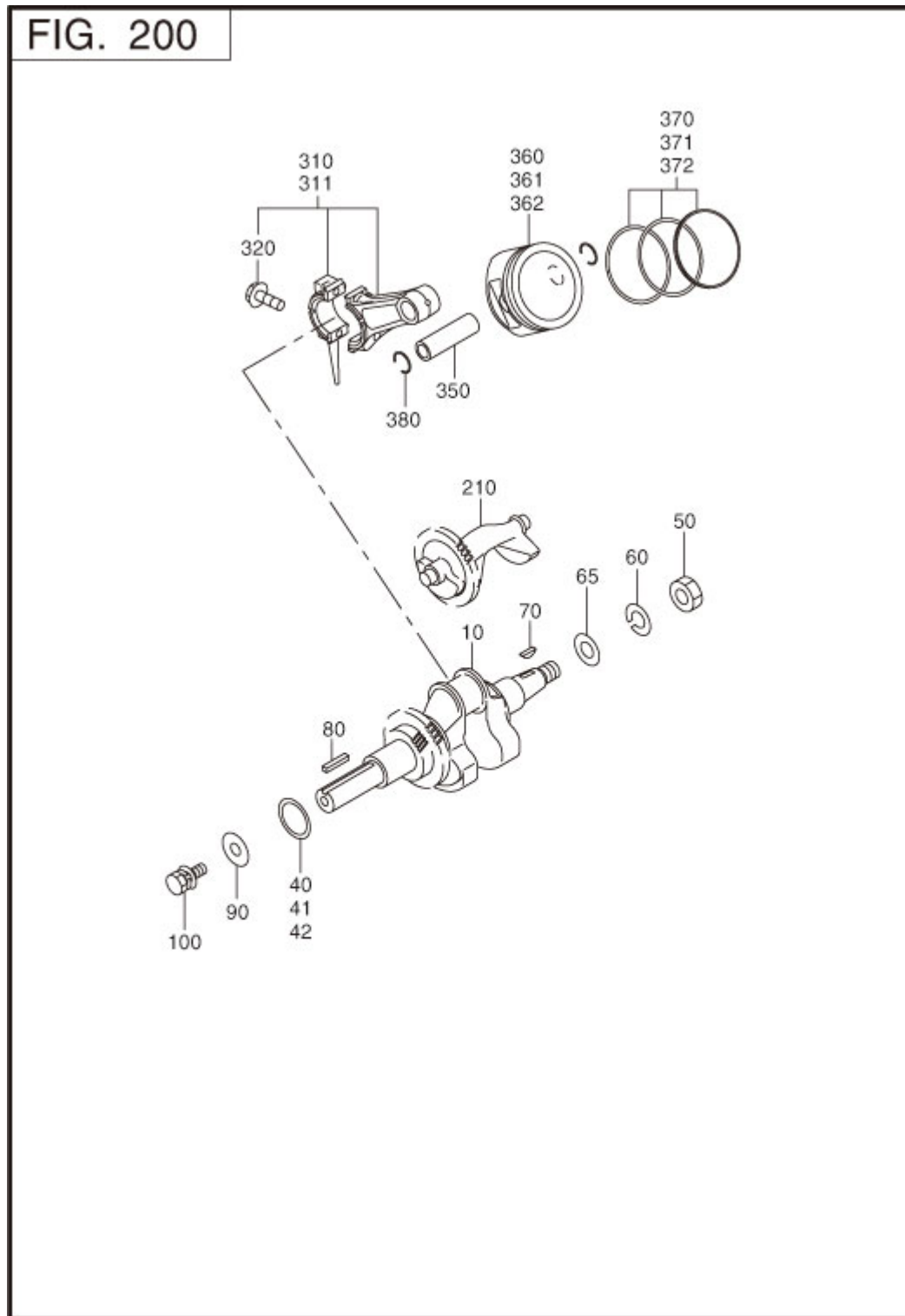
1 CRANK CASE



REF.	PART NUMBER	PART NAME	CODE NO.	QTY	REMARKS	INTERCHANGE
10	267-10101-81	CRANKCASE CP	7153-	1		
	267-10101-71	CRANKCASE CP	6423-7152	1		
	267-10101-61	CRANKCASE CP	-6422	1		267-10101-71
20	263-14211-03	VALVE GUIDE	-	2	6DX11DX32.5L	
21	056-51000-50	CLIP	-	1	10.7DX0.9D	
26	132-07AA0-50	SEAL-INT VALVE	-	1		
28	263-35341-03	RETAINER PLATE	-	1	11DX17.3DX27DX4.7H	
30	044-03500-90	OIL SEAL	-	1	35DX48DX8B	
40	060-03500-10	BALL BEARING	-	1	35DX72DX17B	
46	060-01500-11	BALL BEARING	7153-	1	15DX35DX11B	
	060-01500-10	BALL BEARING	-7152	1	15DX35DX11B	060-01500-11
50	031-00600-20	DOWEL PIN	-	2	6DX14.5L	
60	010-50802-90	STUD	-	2	M8X1.25X30L	
70	010-50602-91	STUD	-	2	M6X1.0X115L	
75	044-00800-10	OIL SEAL	-	1	8DX14DX4B	
80	040-11400-30	PLUG	-	2	M14X1.5X20DX12L	
90	021-11400-20	GASKET	-	2	14.1DX19DX2.3T	
210	267-11002-51	MAIN BEARING COVER C	7153-	1		
	267-11002-41	MAIN BEARING COVER C	6454-7152	1		
	267-11002-31	MAIN BEARING COVER C	-6453	1		267-11002-41
220	044-03500-90	OIL SEAL	-	1	35DX48DX8B	
230	060-03500-10	BALL BEARING	-	1	35DX72DX17B	
235	060-01500-11	BALL BEARING	7153-	1	15DX35DX11B	
	060-01500-10	BALL BEARING	-7152	1	15DX35DX11B	060-01500-11
250	267-45001-11	GOVERNOR GEAR CP	7153-	1		
	267-45001-01	GOVERNOR GEAR CP	-7152	1	60DX36T N=28	
260	205-41901-03	GOVERNOR SLEEVE	-	1	6DX9DX16DX26L	
270	224-63601-01	OIL GAUGE CP	-	2	M22X1.5 L=64+25	
280	021-32000-50	GASKET	-	2	20DX27DX1.5T RUBBER	
290	267-15101-13	GASKET(BEARING COVER	-6453	1	T=0.6	
300	011-00803-40	FLANGE BOLT	6746-	7	M8X1.25X17DX38L	
	267-19999-03	FLANGE BOLT	-6745	7	M8X1.25X17DX40L	
610	267-13001-41	CYLINDER HEAD CP	-	1		
620	267-15001-13	GASKET(HEAD)	-	1	T=0.2	
630	011-01000-30	FLANGE BOLT	-	4	M10X1.25X19DX65L	

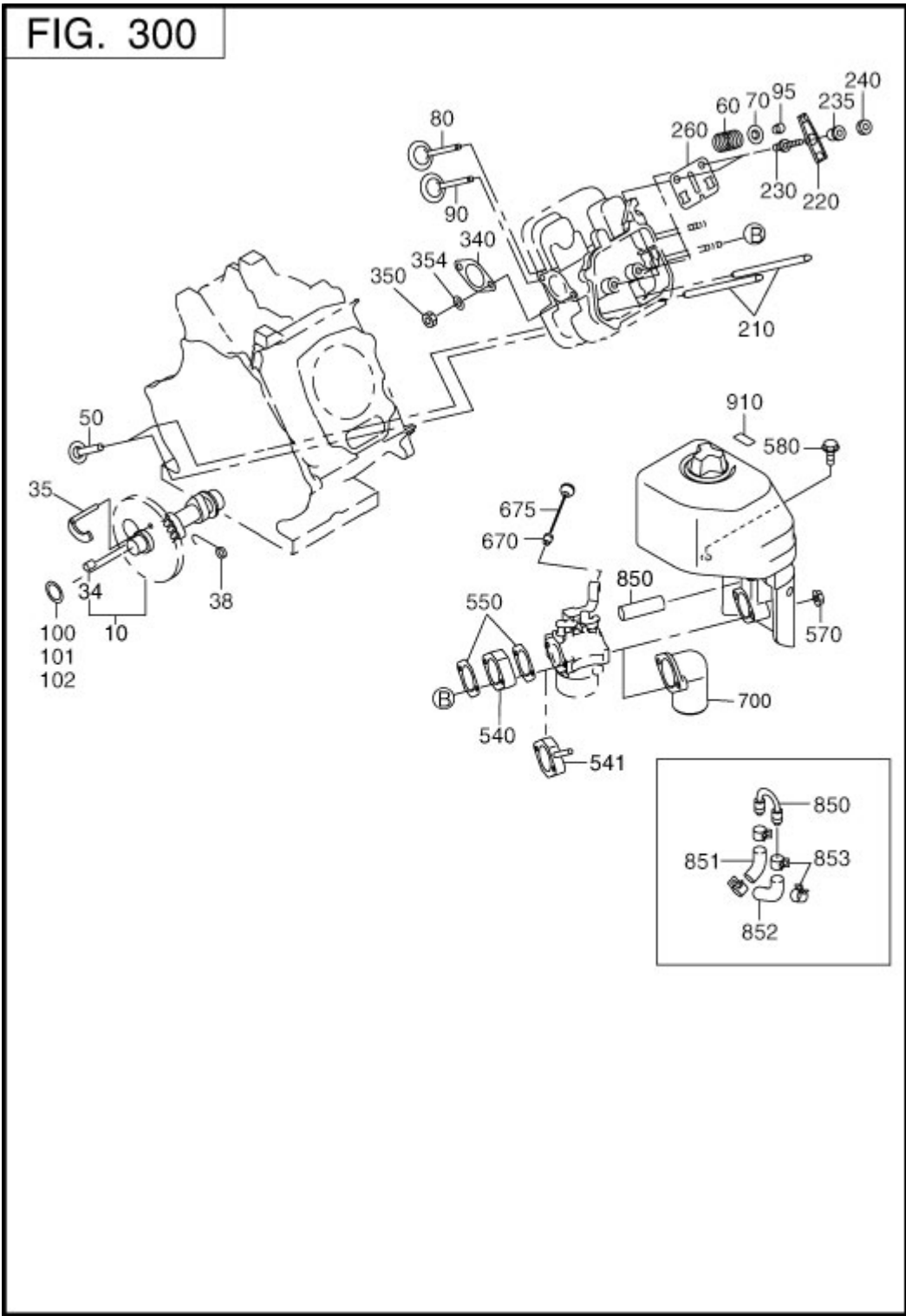
REF.	PART NUMBER	PART NAME	CODE NO.	QTY	REMARKS	INTERCHANGE
680	267-15501-11	ROCKER COVER CP	-	1		
690	267-15201-13	GASKET(ROCKER COV)	-	1	T=0.5	
700	031-00600-20	DOWEL PIN	-	2	6DX14.5L	
710	011-00601-30	FLANGE BOLT	-	4	M6X1.0X14DX25L	
722	267-16001-13	LEAF VALVE	6545-	1		
	267-16001-A3	LEAF VALVE	-6544	1		267-16001-13
723	267-16101-13	RETAINER PLATE	6545-	1		
	267-16101-A3	RETAINER PLATE	-6544	1		267-16101-13
726	011-00600-10	FLANGE BOLT	-	1	M6X1.0X14DX8L	
960	267-99001-27	GASKET SET	-	1		

2 CRANKSHAFT,PISTON



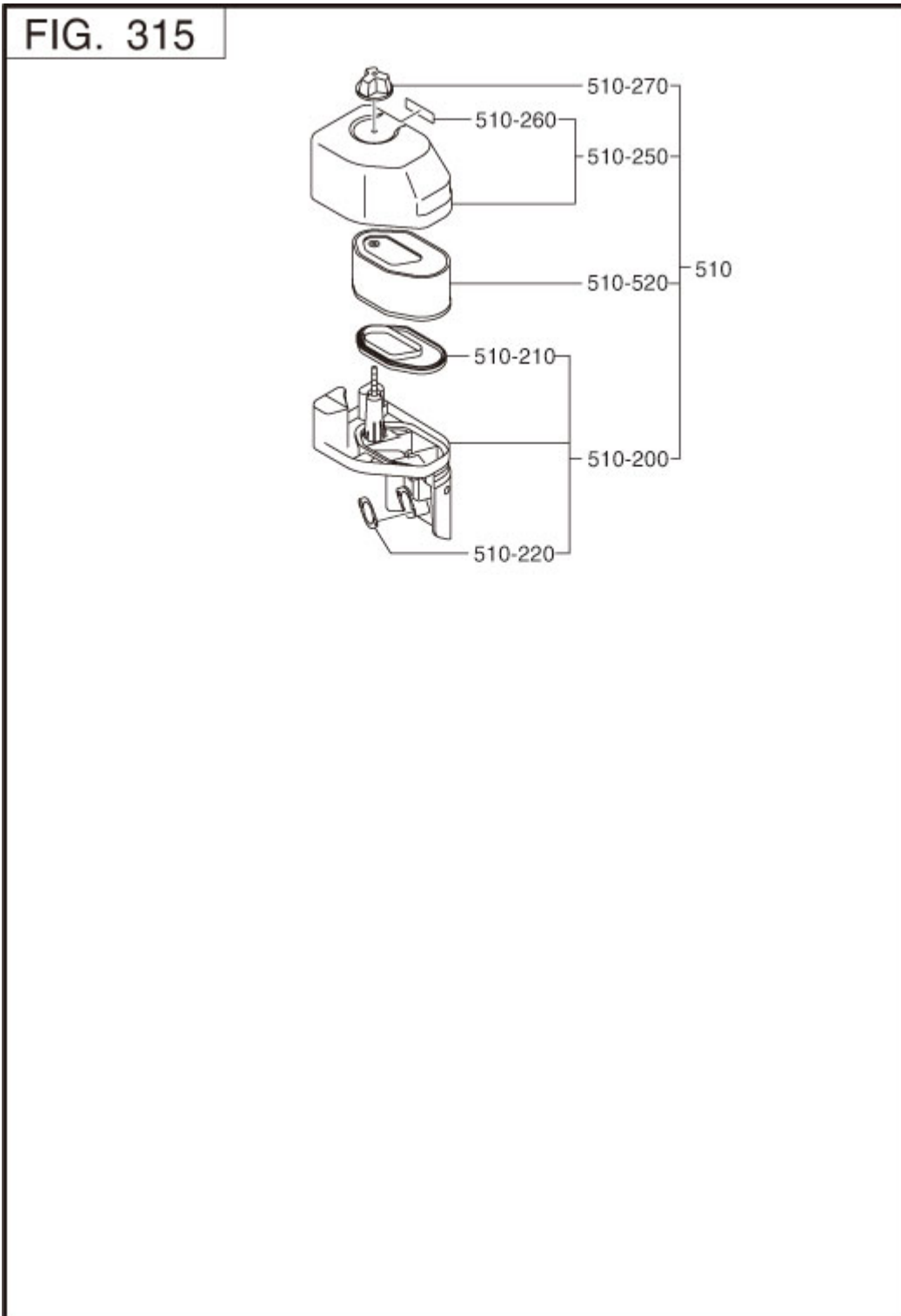
REF.	PART NUMBER	PART NAME	CODE NO.	QTY	REMARKS	INTERCHANGE
10	267-21201-11	CRANKSHAFT CP	-	1	L=348 25.4DX1/5.33 T	
40	023-03501-60	SPACER	-	1	35.3DX45DX0.6T	
41	023-03501-70	SPACER	-	1	35.3DX45DX0.8T	
42	023-03501-80	SPACER	-	1	35.3DX45DX1.0T	
50	018-01800-10	FLANGE NUT	6666-	1	M18X1.5X31DX14H	
	002-18180-00	NUT	-6665	1	M18X1.5X15H	
60	003-20180-00	SPRING WASHER	-6665	1	18.2DX31DX4.6T	
65	003-10180-00	WASHER	-	1	19DX32DX2.6T	
70	005-32054-01	WOODRUFF KEY	-	1	5BX7.5HX19D	
210	267-24101-13	BALANCER SHAFT	-	1	L=146 81DX8B N=38	
310	267-22501-10	CONNECTING ROD AY	-	1	110CDX31B 38D-21D	
311	267-22503-00	CONNECTING ROD AY	-	1	0.25 U.S.	
320	001-05084-00	FLANGE BOLT	-	2	M8X1.25X16DX40L	
350	263-23301-23	PISTON PIN	6666-	1	21DX15DX64.2L	
	263-23301-03	PISTON PIN	-6665	1	21DX15DX64.2L	263-23301-23
360	267-23401-03	PISTON	-	1	STD(89DX55H)	
361	267-23402-03	PISTON	-	1	0.25 O.S.(89DX55H)	
362	267-23403-03	PISTON	-	1	0.50 O.S.(89DX55H)	
370	267-23501-07	PISTON RING SET	-	1	STD(89D)	
371	267-23502-07	PISTON RING SET	-	1	0.25 O.S.(89D)	
372	267-23503-07	PISTON RING SET	-	1	0.50 O.S.(89D)	
380	056-52100-20	CLIP	-	2	22.1DX1.4D	

3 INTAKE EXHAUST



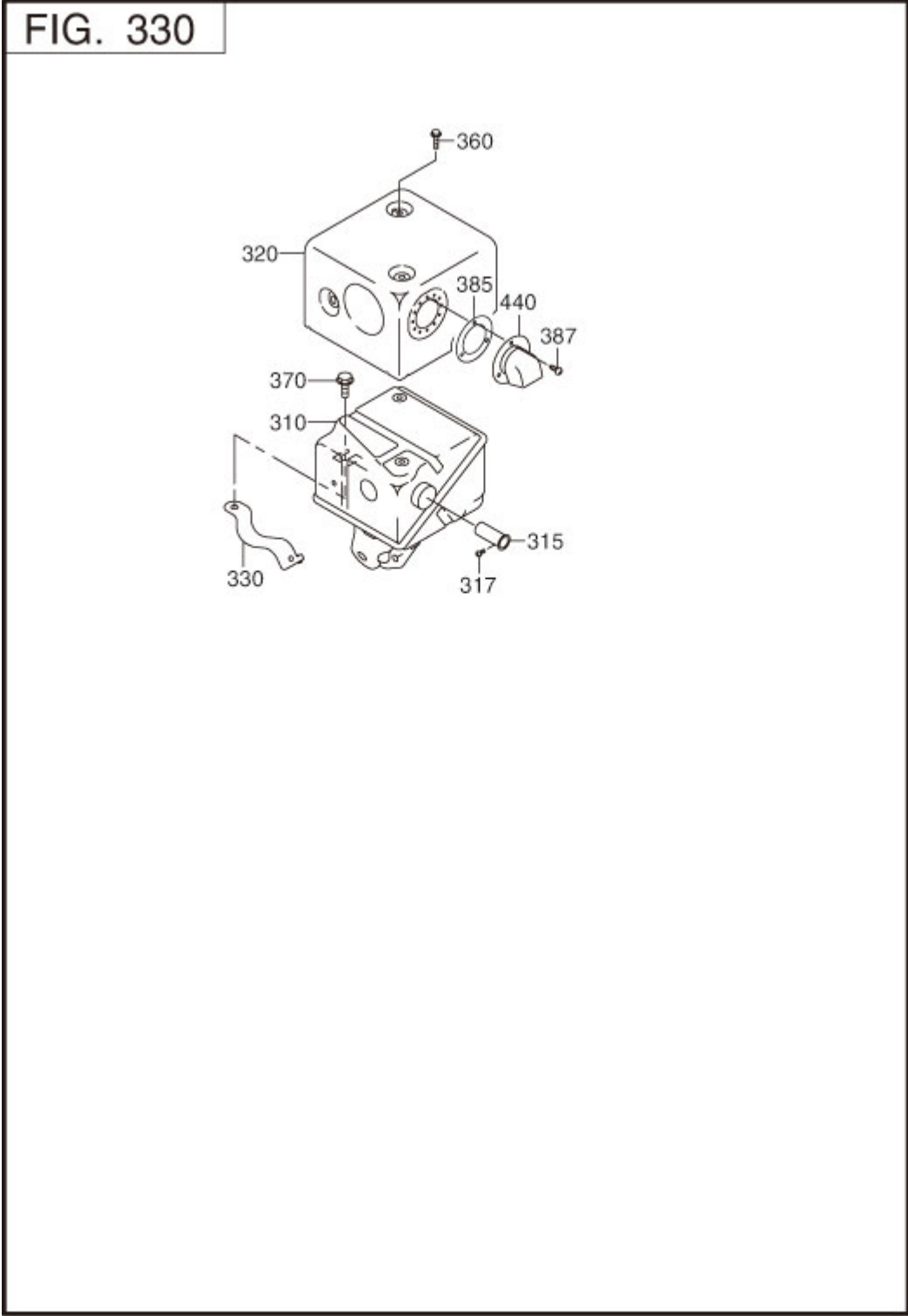
REF.	PART NUMBER	PART NAME	CODE NO.	QTY	REMARKS	INTERCHANGE
10	267-31701-01	CAMSHAFT CP	-	1	L=142 109DX9.5B N=62	
34	005-19041-00	SPRING PIN	-	1	4.4DX10LX0.8T	
35	246-36201-11	RELEASE LEVER CP	-	1		
38	246-36701-03	RETURN SPRING	-	1	6.2DX0.3DX3L N=7.5	
50	239-33301-13	TAPPET	-	2	26DX8DX48L	
60	246-33611-03	VALVE SPRING	-	2	22.2DX2.9DX37L N=6.5	
70	246-33711-13	SPRING RETAINER	-	2	7.6DX26DX8T	
80	267-33402-H3	INTAKE VALVE	7031-	1		
	263-33401-03	INTAKE VALVE	-7030	1	35DX6DX79.8L	
90	267-33502-H3	EXHAUST VALVE	7031-	1		
	263-33502-13	EXHAUST VALVE	-7030	1	31DX6DX80.3L	
95	246-35501-03	COLLET-VALVE	-	4		
100	023-02200-50	SPACER	-	1	22.2DX32.5DX0.6T	
101	023-02200-60	SPACER	-	1	22.2DX32.5DX0.7T	
102	023-02200-70	SPACER	-	1	22.2DX32.5DX0.8T	
210	267-35301-C1	PUSH ROD CP	6454-	2	8DX158L	
	267-35301-B1	PUSH ROD CP	-6453	2	8DX158L	267-35301-C1
220	267-36102-03	ROCKER ARM	7153-	2		
	267-36101-13	ROCKER ARM	-7152	2		267-36102-03
230	261-35801-13	BOLT(PIVOT)	-	2		
235	267-35701-03	PIVOT	-	2		
240	017-00601-10	NUT	-	2	M6X0.75X3.6H	
260	267-36501-13	GUIDE PLATE	6545-	1		
	267-36501-A3	GUIDE PLATE	-6544	1		267-36501-13
340	246-35201-03	GASKET(MUFFLER)	-	1	T=0.2 30D 8.5DX52P	
350	017-60800-20	SELF LOCK NUT	-	2	M8X1.25X13H	
540	267-32901-03	INSULATOR	-	1	T=15 26.5D 6.5DX46P	
550	267-35901-13	GASKET(INSULATOR)	6545-	2	T=0.4 26.5D 6.5DX46P	
	267-35901-A3	GASKET(INSULATOR)	-6544	2	T=0.4 26.5D 6.5DX46P	267-35901-13
570	002-38060-00	FLANGE NUT	-	2	M6X1.0X13DX6H	
580	011-00601-01	FLANGE BOLT	-	1	M6X1.0X13DX28L	
670	024-10200-10	GROMMET	-	1	2DX6DX12H	
675	246-45006-01	KNOB CP	-	1		
850	085-11001-51	RUBBER PIPE	-	1	10DX15DX75L	085-11000-00

3 INTAKE EXHAUST



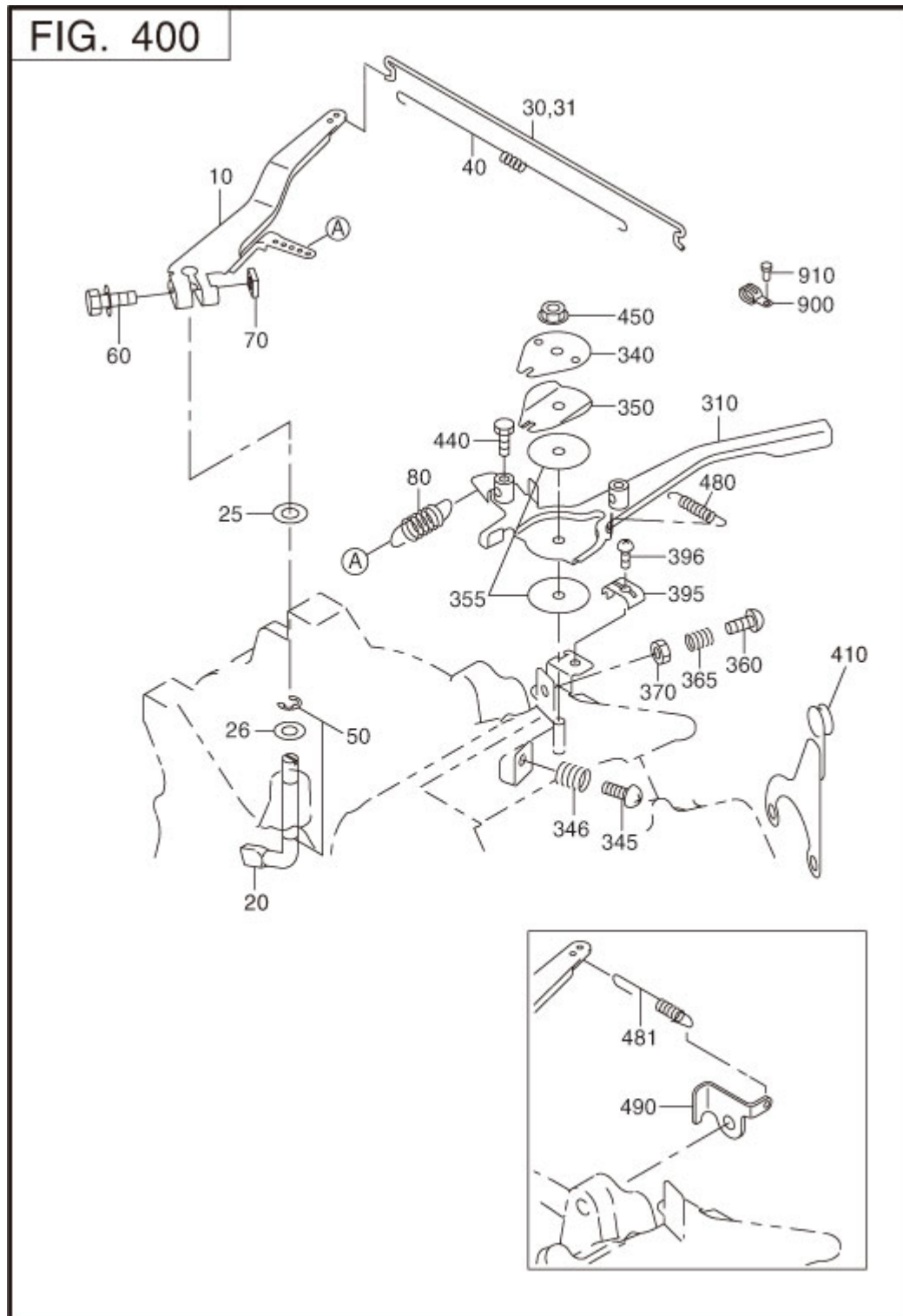
REF.	PART NUMBER	PART NAME	CODE NO.	QTY	REMARKS	INTERCHANGE
510	267-32601-20	AIR CLEANER AY	-	1		
-200	267-35001-11	BASE CP.	-	1		
-210	267-35004-03	PACKING	-	1		
-220	270-32720-08	PACKING	-	1		
-250	267-35002-11	COVER CP.	-	1		
-260	267-35005-03	LABEL	-	1		
-270	227-36523-03	CAP NUT	-	1		
-520	267-35003-11	CLEANER ELEMENT CP	-	1		

3 INTAKE EXHAUST



REF.	PART NUMBER	PART NAME	CODE NO.	QTY	REMARKS	INTERCHANGE
310	267-30101-22	MUFFLER UN	-	1		
320	267-34201-01	MUFFLER COVER CP	-	1		
330	267-37001-01	MUFFLER BRACKET CP	-	1		
360	011-00600-10	FLANGE BOLT	7142-	4	M6X1.0X14DX8L	
	011-00600-10	FLANGE BOLT	-7141	5	M6X1.0X14DX8L	
370	001-04081-60	FLANGE BOLT	-	2	M8X1.25X16DX16L	
385	267-37101-12	TAIL SCREEN UN	6819-	1		
	267-37101-02	TAIL SCREEN UN	-6818	1		
387	015-00400-60	TAPPING SCREW	-	3	M4X6L	

4 GOVERNOR,OPERATION

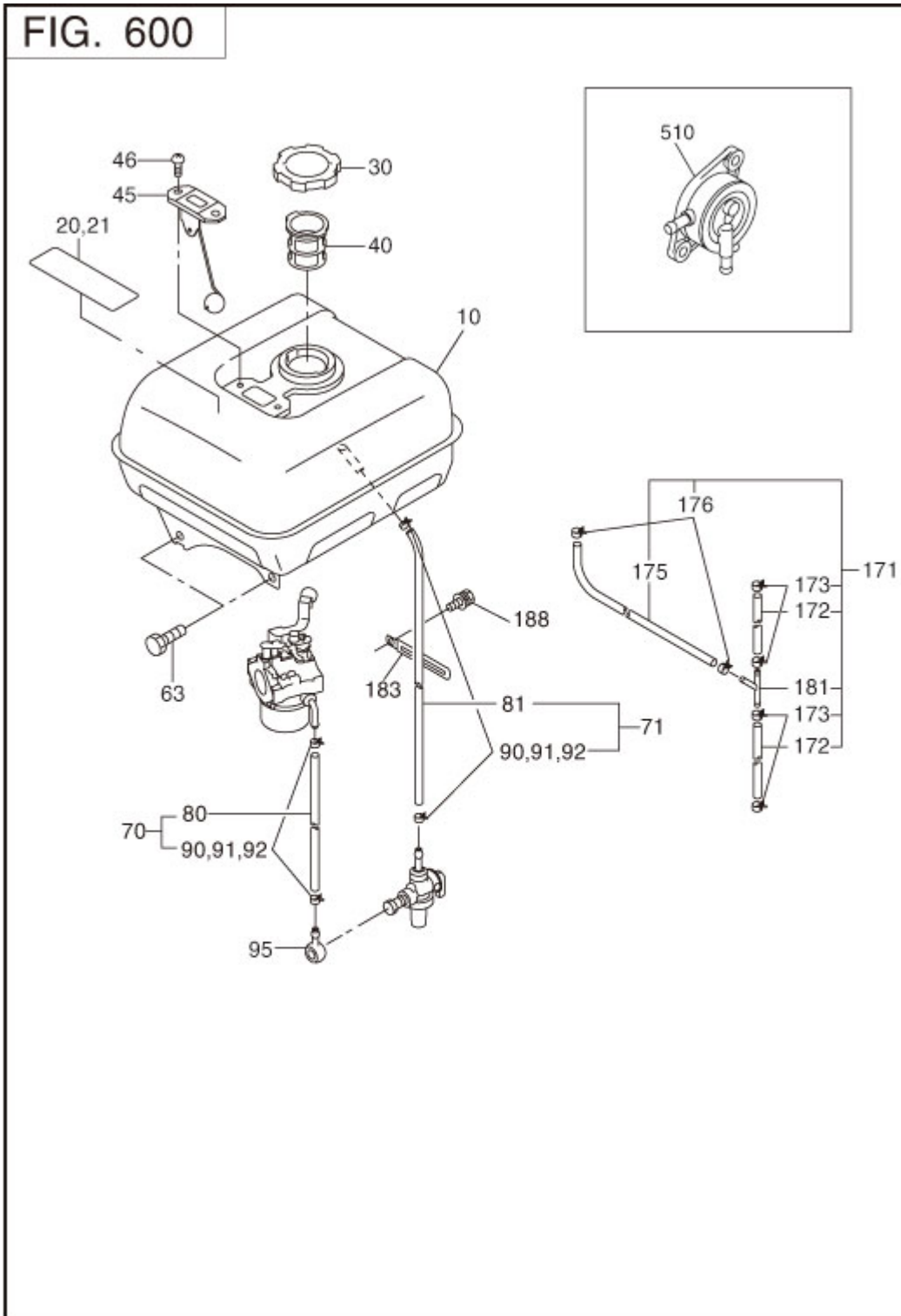


REF.	PART NUMBER	PART NAME	CODE NO.	QTY	REMARKS	INTERCHANGE
10	267-42301-13	GOVERNOR LEVER	-	1		
20	267-42201-03	GOVERNOR SHAFT	-	1		
26	003-11080-00	WASHER	-	1	8.5DX18DX1.6T	
30	267-42701-01	GOVERNOR ROD CP	-	1		
40	267-42801-33	ROD SPRING	6757-	1	6DX0.5DX181L N=28.5	
	267-42801-23	ROD SPRING	6696-6756	1	6DX0.5DX178L N=28.5	267-42801-33
	267-42801-13	ROD SPRING	-6695	1	5.7DX0.4DX148L N=30.	267-42801-23
50	003-13060-00	CLIP	-	2	6DX12DX0.8T	
60	001-14063-00	BOLT AND WASHER AY	-	1	M6X1.0X30L W/W,SW	
70	018-60600-20	NUT	-	1	M6X1.0X4.9H SQUARE	
80	267-42501-03	GOVERNOR SPRING	-	1	11.3DX1.2DX40L N=12	
310	267-43301-03	SPEED CONTROL LEVER	-	1		
340	227-43501-13	STOP PLATE	-	1		
350	227-45002-03	SPRING WASHER	-	1		
355	021-70600-60	FRICTION WASHER	-	2	6.5DX33DX0.5T NYLON	
360	004-31061-80	SCREW,PANHEAD	-	1	M6X1.0X18L	
370	002-27060-00	NUT	-	1	M6X1.0X3.6H	
450	017-60600-20	SELF LOCK NUT	-	1	M6X1.0X13DX6.9H	

REF.	PART NUMBER	PART NAME	CODE NO.	QTY	REMARKS	INTERCHANGE
10	267-51201-01	BLOWER HOUSING CP	-	1	D ROBIN YELLOW	
20	073-20054-80	LABEL(TRADE MARK)	6666-	1	88D	
	267-91701-03	LABEL(TRADE MARK)	-6665	1	88D	
35	267-91860-03	LABEL(ENGINE NAME)	-	1	38X34 ENGLISH	
40	011-00600-20	FLANGE BOLT	-	5	M6X1.0X14DX12L	
60	267-52601-12	CYLINDER BAFFLE 1 UN	-	1		
61	267-52701-03	CYLINDER BAFFLE 2	-	1		
80	011-00600-10	FLANGE BOLT	-	4	M6X1.0X14DX8L	
220	011-00600-10	FLANGE BOLT	-	4	M6X1.0X14DX8L	
230	001-65081-20	BOLT	-	3	M8X1.25X12L	

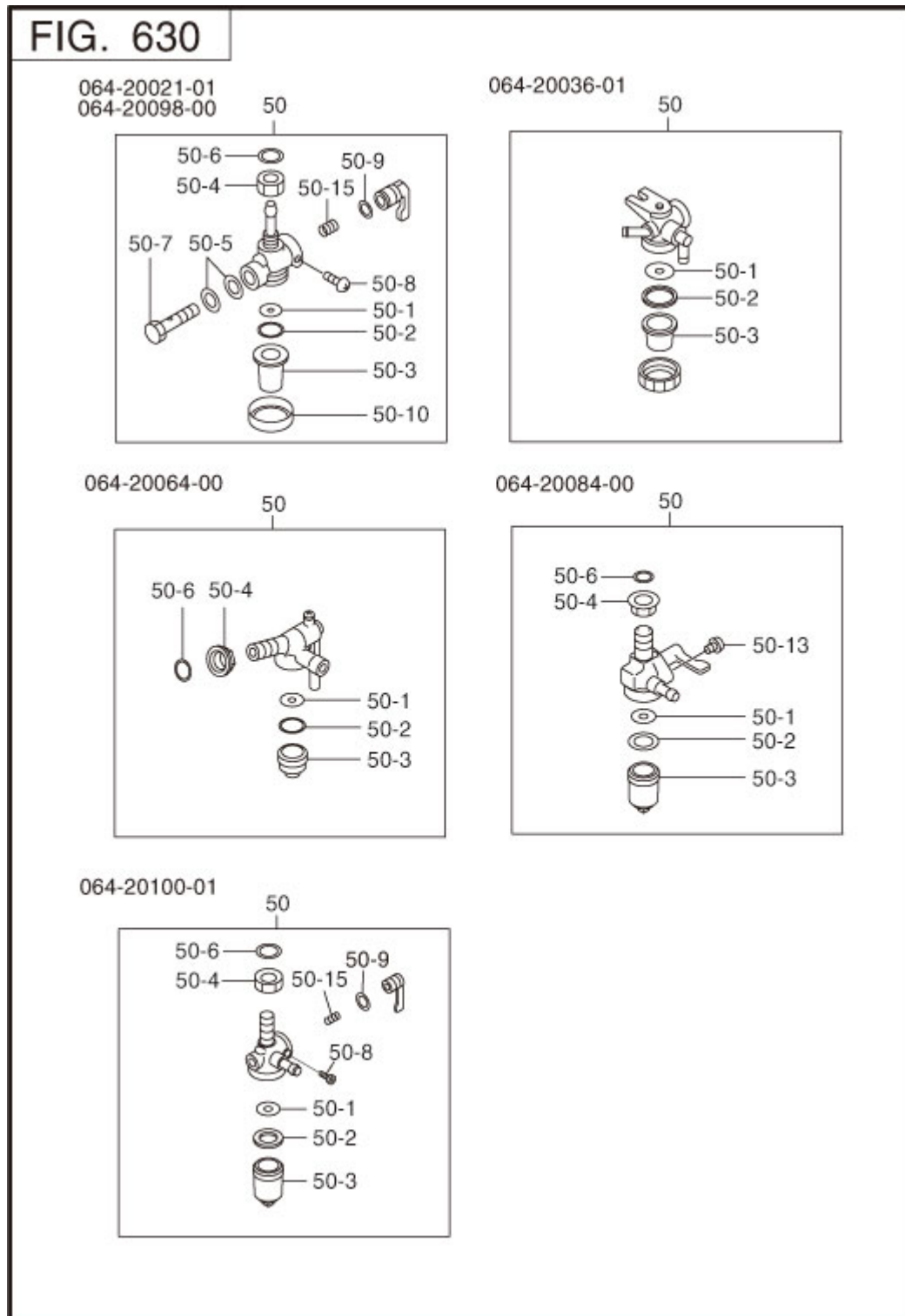
REF.	PART NUMBER	PART NAME	CODE NO.	QTY	REMARKS	INTERCHANGE
210	267-50201-10	RECOIL STARTER AY	-	1	D 206PD	
- 1	261-50115-08	SPIRAL SPRING	-	1		
- 2	246-50120-08	REEL	-	1		
- 3	226-50113-08	STARTER ROPE	-	1		
- 4	261-50100-08	STARTER KNOB	-	1		
- 5	246-50125-08	RATCHET	-	2		
- 6	246-50130-08	FRICTION SPRING	-	1		
- 7	227-50135-08	RETURN SPRING	-	2		
- 8	246-50160-08	RATCHET GUIDE	-	1		
- 11	224-50150-08	STARTER PULLEY	-	1		
- 49	227-50152-08	SET SCREW	-	1		

6 FUEL LUBRICANT



REF.	PART NUMBER	PART NAME	CODE NO.	QTY	REMARKS	INTERCHANGE
10	267-60101-01	FUEL TANK CP	-	1	7L ROBIN YELLOW	
20	073-20044-50	LABEL(CAUTION)	-	1	38X70 ILLUSTR	
21	073-20039-00	LABEL(WARNING)	-	1	38X80 ENGLISH	
30	043-04300-15	FUEL TANK CAP CP	-	1	42.5DX68DX14H	
40	064-13600-10	FUEL FILTER	-	1	36DX46DX43H	
63	001-13082-00	BOLT AND WASHER AY	-	4	M8X1.25X20L W/SW	
70	224-62611-01	FUEL PIPE 11 CP	-6695	1	6DX12DX100L	
80	085-10613-10	RUBBER PIPE	6696-	1	6DX11DX100L	085-19600-00
	085-10602-30	RUBBER PIPE	-6695	1	6DX12DX100L	085-10600-00
81	085-10613-20	RUBBER PIPE	6696-	1	6DX11DX250L	085-19600-00
	085-10607-00	RUBBER PIPE	-6695	1	6DX12DX250L	085-10600-00
90	056-11000-30	HOSE CLAMP	6696-	3	10DX8BX1T	
	056-11100-20	HOSE CLAMP	-6695	2	11.5DX8BX0.7T	
91	056-11100-20	HOSE CLAMP	-6695	1	11.5DX8BX0.7T	
92	056-11100-30	HOSE CLAMP	6696-	1	11DX8BX0.7T	
	056-11200-40	HOSE CLAMP	-6695	1	12DX8BX0.8T	
95	052-10700-42	BANJO	-6990	1	7.2DX7.2DX25L	

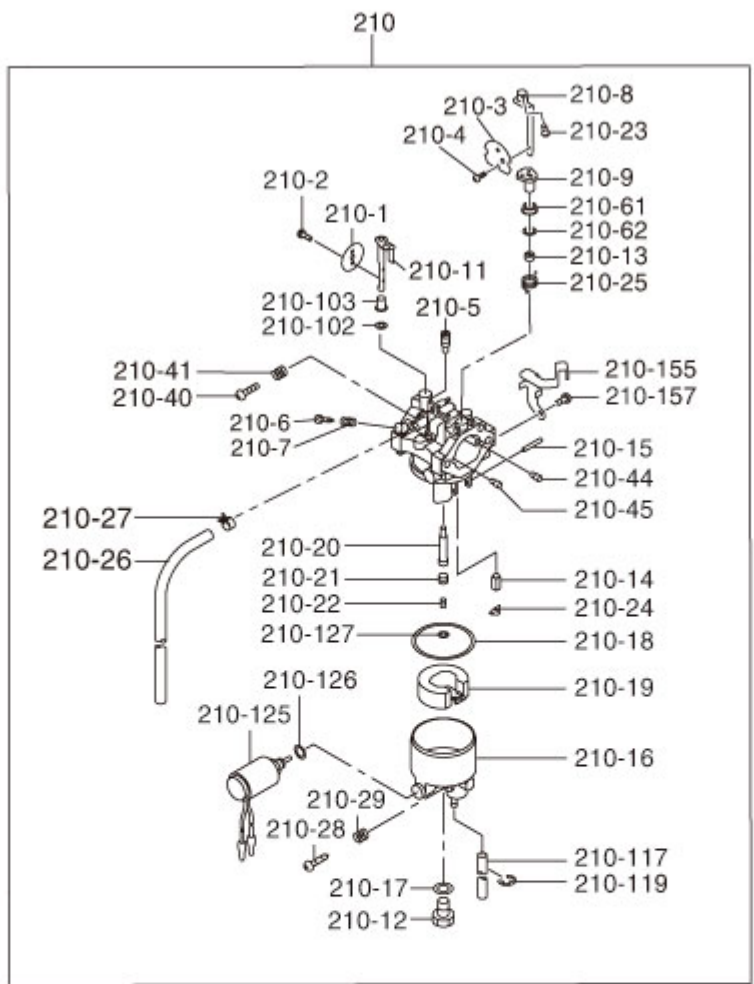
6 FUEL LUBRICANT



REF.	PART NUMBER	PART NAME	CODE NO.	QTY	REMARKS	INTERCHANGE
50	064-20021-01	FUEL STRAINER AY	-	1		
- 1	064-20002-20	FILTER	-	1		
- 2	064-20002-30	GASKET	-	1		
- 3	064-20019-10	CUP	-	1		
- 4	064-20003-20	NUT	-	1		
- 5	064-20002-50	FIBER GASKET	-	2		
- 7	064-20002-40	BANJO BOLT	-	1		
- 8	064-20027-90	BOLT	-	1		
- 9	064-20003-30	O-RING	-	1		
- 10	064-20024-10	LOCK NUT	-	1		
- 15	064-20032-30	SPRING	-	1		

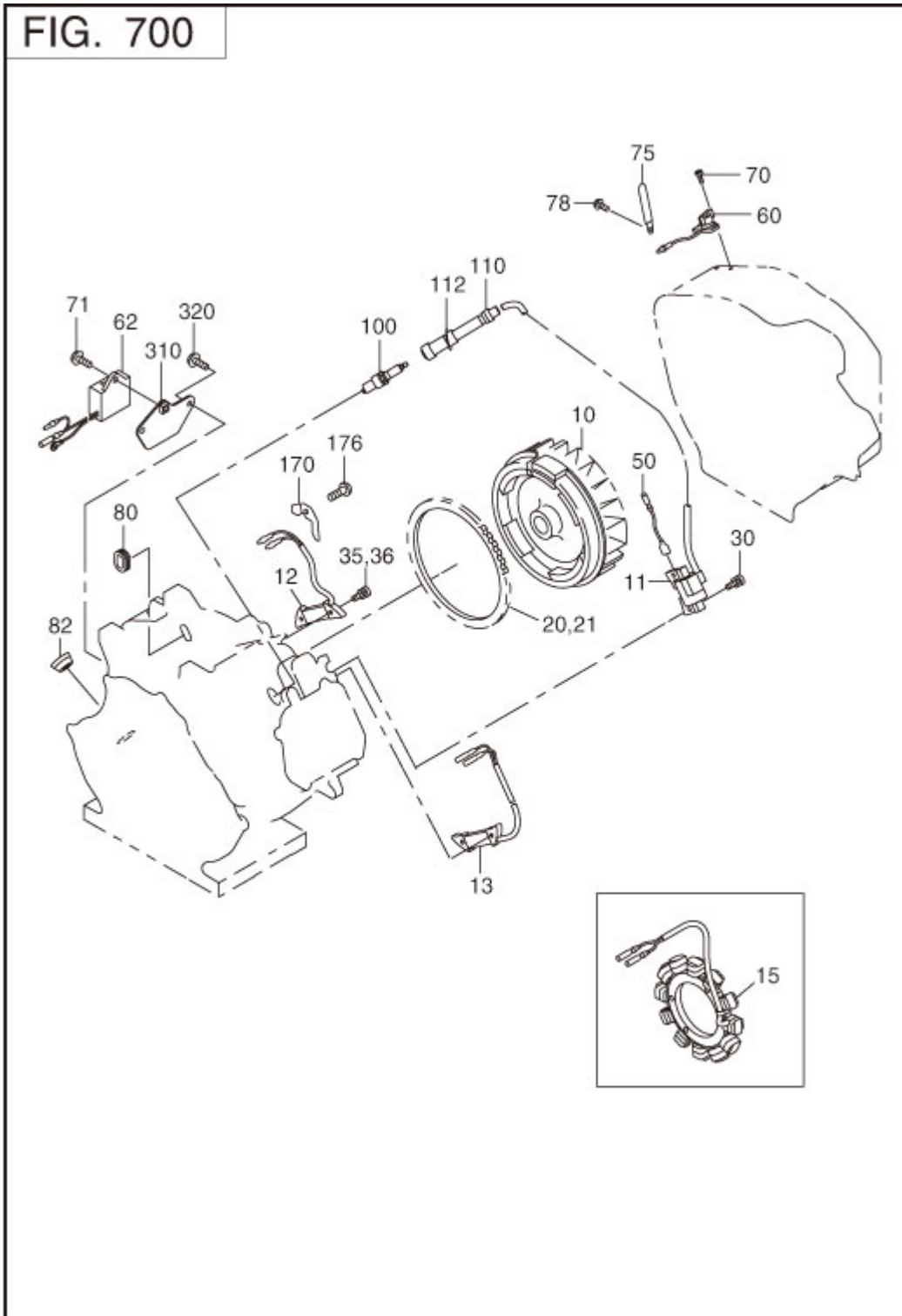
6 FUEL LUBRICANT

FIG. 640



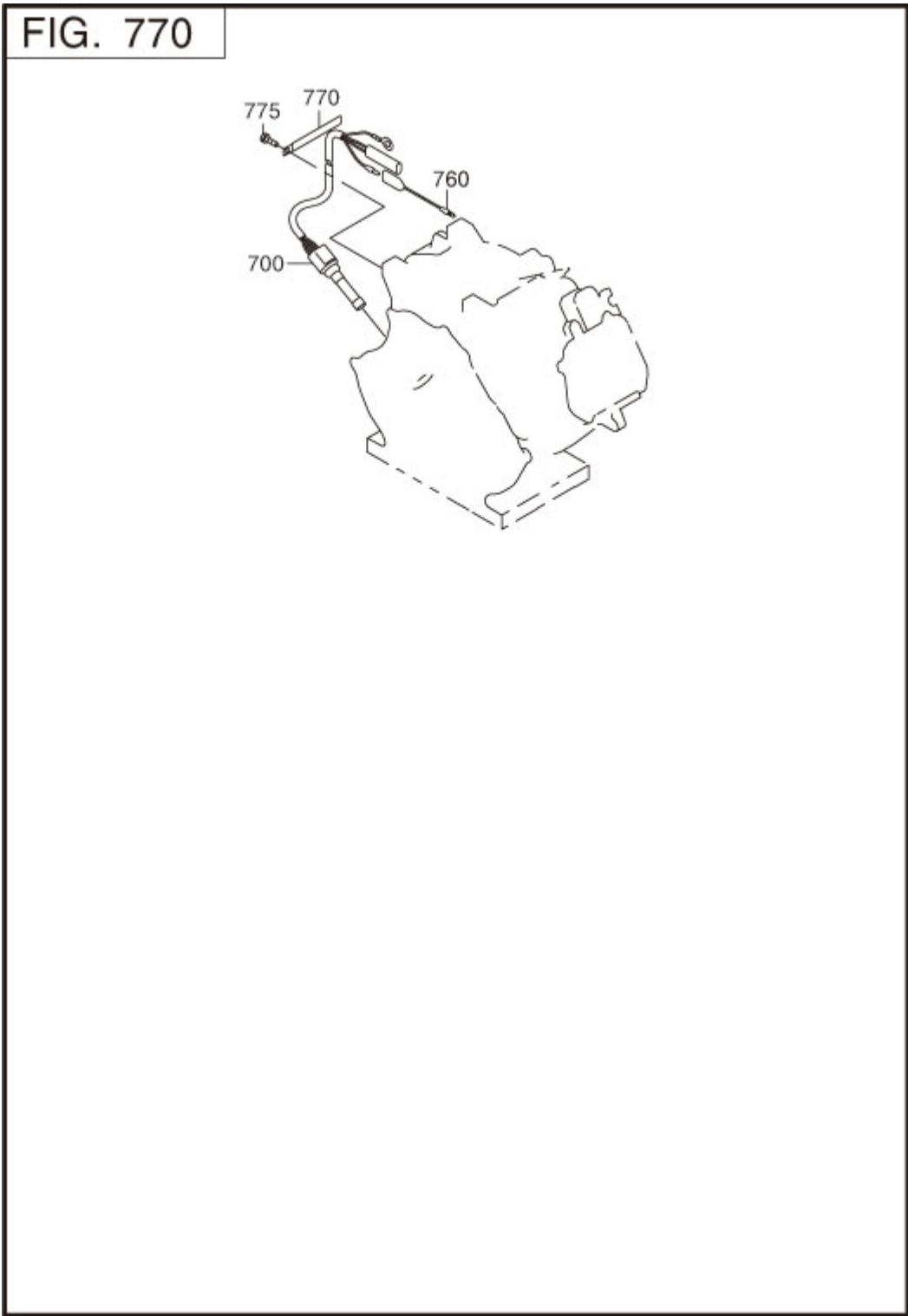
REF.	PART NUMBER	PART NAME	CODE NO.	QTY	REMARKS	INTERCHANGE
210	267-62302-20	CARBURETOR AY	-	1		
- 1	267-62535-08	THROTTLE VALVE	-	1		
- 2	209-62351-08	SCREW	-	2		
- 3	267-62525-08	CHOKE VALVE	-	1		
- 4	237-62451-08	SCREW	-	2		
- 5	227-62422-08	PILOT JET	-	1	#50	
- 8	267-62520-08	CHOKE LEVER-A	-	1		
- 9	239-62560-08	RING	-	1		
- 11	267-62531-08	THROTTLE SHAFT A	-	1		
- 12	150-62358-08	BOLT	-	1		
- 13	226-62550-08	RING	-	1		
- 14	224-62312-18	NEEDLE-A	-	1		
- 15	214-62515-08	PIN	-	1		
- 16	234-62552-08	FLOAT BODY-A	-	1		
- 17	207-62345-08	INSERT WASHER	-	1		
- 18	206-62540-08	PACKING	-	1		
- 19	234-62506-08	FLOT-A	-	1		
- 20	267-62440-08	MAIN NOZZLE	-	1		
- 21	246-62425-08	JET HOLDER	-	1		
- 22	267-62402-08	MAIN JET	-	1		
- 23	242-62323-08	SCREW	-	1		
- 24	224-62569-18	CLIP	-	1		
- 28	224-62450-08	SCREW	-	1		
- 29	209-62445-08	SPRING	-	1		
- 40	224-62452-08	SCREW	-	1		
- 41	206-62446-08	SPRING	-	1		
- 44	106-62411-08	AIR JET	-	1		
- 45	246-62410-08	AIR JET	-	1		
- 61	247-62550-08	CAP (CHOKE)	-	1		
- 62	236-62680-08	SEAL	-	1		
-102	106-62392-08	SEAL	-	1		
-103	267-62450-08	RING	-	1		
-155	267-62451-08	BRACKET	-	1		
-157	267-62452-08	SCREW	-	1		

7 ELECTRIC DEVICE



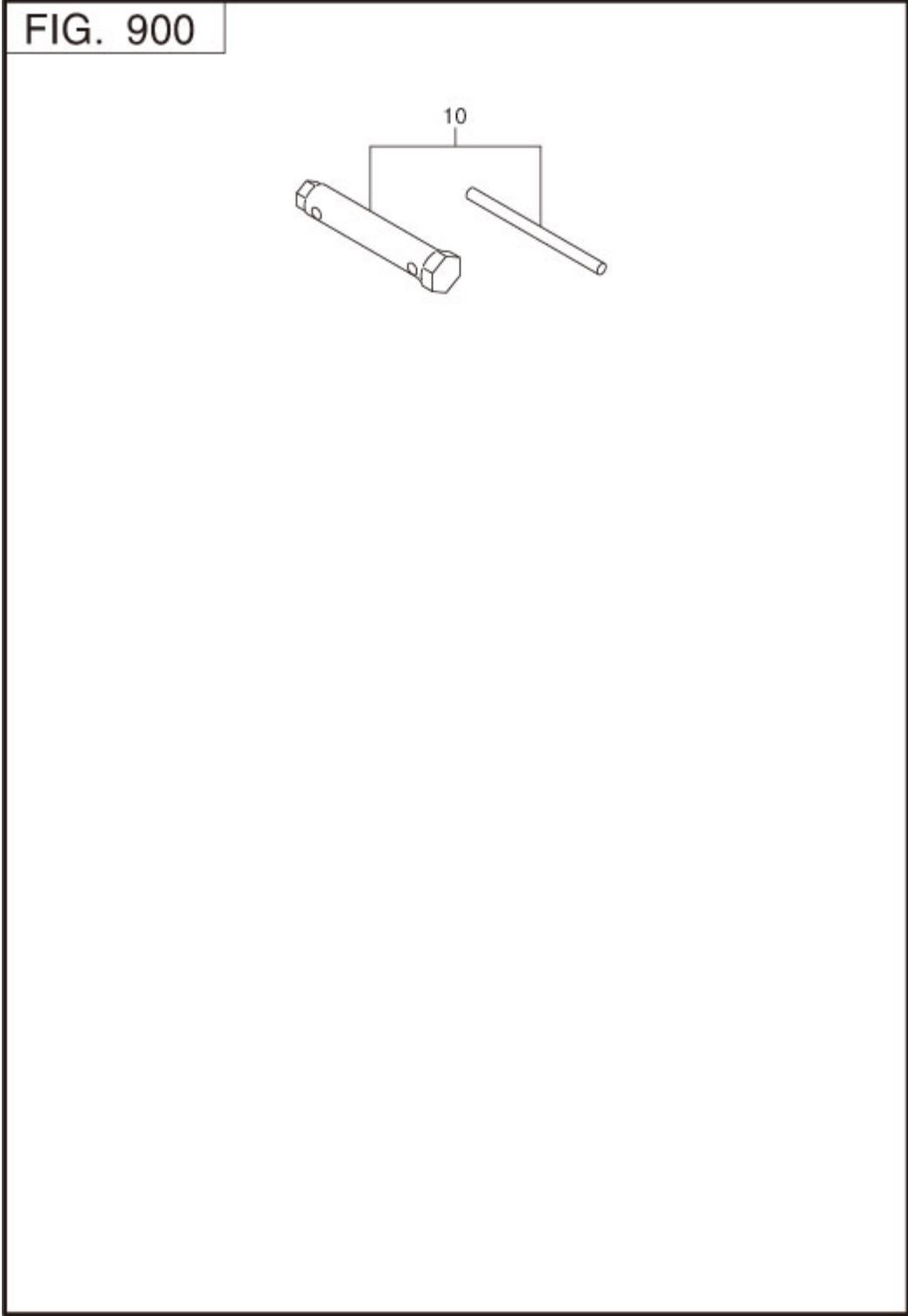
REF.	PART NUMBER	PART NAME	CODE NO.	QTY	REMARKS	INTERCHANGE
10	267-79201-11	FLYWHEEL CP	-	1	MARK MF5118	
11	267-79401-21	IGNITION COIL CP	-	1	MARK BM3748 A	
30	001-14062-50	BOLT AND WASHER AY	-	2	M6X1.0X25L W/W,SW	
50	267-73101-01	WIRE 1 CP	-	1	L=330 BLACK	
60	X66-00003-61	SWITCH AY	6666-	1		066-00003-61
	066-00003-61	SWITCH AY	-6665	1		066-00004-70
70	015-00400-90	TAPPING SCREW	-	2	M4X12L	
80	227-75001-03	GROMMET	-	1		
100	065-01404-80	SPARK PLUG	-	1	NGK BPR6ES	
110	065-50002-30	SPARK PLUG CAP	-	1		

8 ELECTRIC DEVICE



REF.	PART NUMBER	PART NAME	CODE NO.	QTY	REMARKS	INTERCHANGE
700	KS3-11020-01	OIL SENSOR CP 11	-	1		
760	214-73122-01	WIRE 22 CP	-	1	L=85 BLACK	
770	056-60002-50	CLAMP	-	2	6.5DX10BX95LX0.6T	
775	011-00600-10	FLANGE BOLT	-	2	M6X1.0X14DX8L	

9 ACCESSORIES LABEL



REF.	PART NUMBER	PART NAME	CODE NO.	QTY	REMARKS	INTERCHANGE
10	224-90303-00	ACCESSORY TOOL KIT	-	1		